

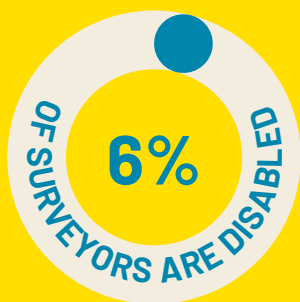
SOCIAL IMPACT REPORT 20 25



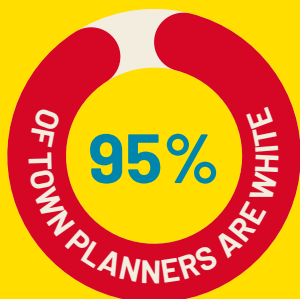
Welcome to Build Studios' 2025 social impact report. We've had a busy year breaking down barriers in the built environment, working with young people, running our co-working space and hosting events.



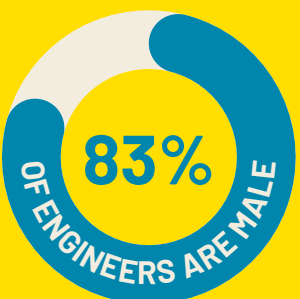
The Context



INSPIRING YOUNG PEOPLE



MAKING CONNECTIONS



COLLABORATION



Our Values



BUILD STUDIOS

50%

of senior executives in the real estate sector attended an independent school or selective state school.

SOCIAL IMPACT REPORT

Our Achievements

WE'VE
SUPPORTED

315

YOUNG
PEOPLE



Through workshops and careers sessions, we raised access and aspiration in the built environment, inspiring young people to explore future pathways.

5
SCHOOLS



Funded by Lambeth Council, working with the LSA, we ran Key Stage 2 workshops on materials, sustainability, and healthy home design.



The London
School of
Architecture

HEALTHY HOMES
WORKSHOPS

Lambeth



CAREERS
ENRICHMENT



We relaunched our Careers Enrichment Programme at Oasis Academy Southbank, featuring engineers, architects, and placemakers.

We welcomed South Bank University Sixth Form students to Build Studios for careers sessions with industry experts in engineering, energy, consulting, and BIM capabilities.



SBU SIXTH FORM



SOCIAL IMPACT REPORT

Our Achievements

EVENTS + DESKS

Through the events we hosted and the workspaces we provided, we fostered collaboration and engagement.

57
GUESTS

We hosted our 5th Making Space For Women event on how we can design child-friendly cities.

MAKING
SPACE
FOR
WOMEN

5th
EVENT

22
GUESTS

We ran an Alternative Practice event for students and young workers on biodiversity in hard urban landscapes with Global Generation and Hubbub.

Desks rented to charity workers

2

Desks rented to work experience students

7

ALTERNATIVE PRACTICE



Learn how you can support us!

BUILD STUDIOS